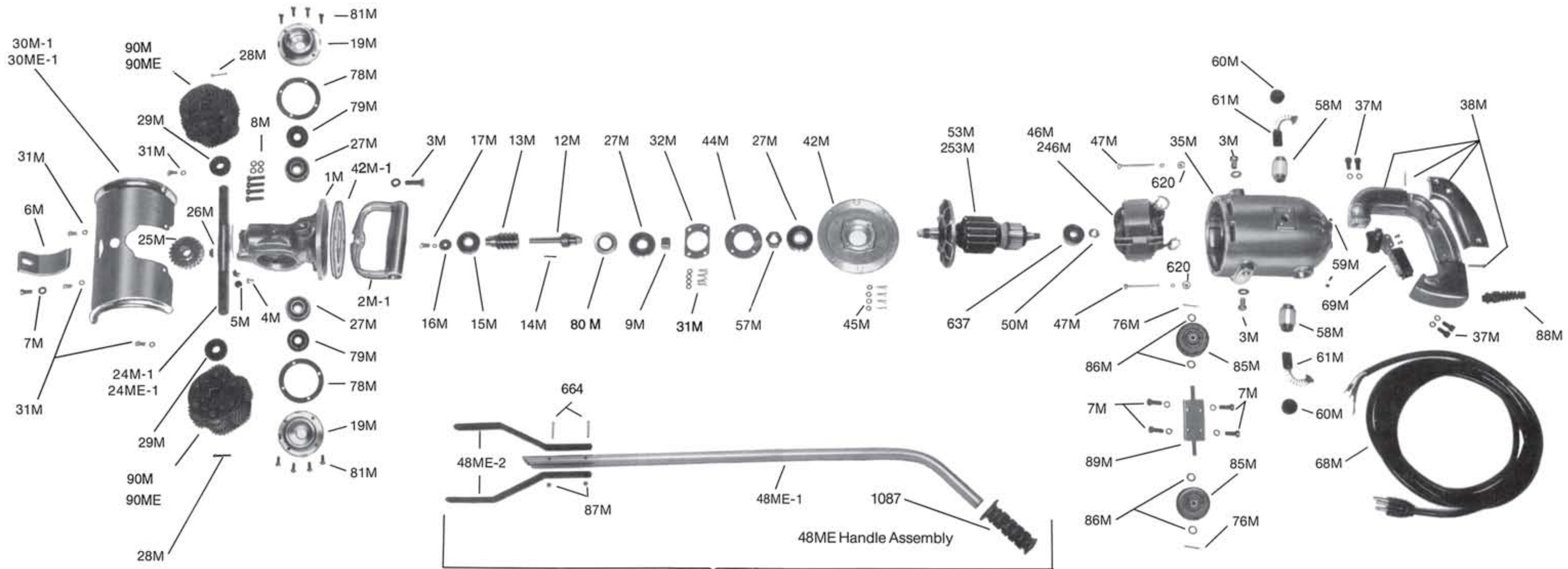


Model M

Motor Housing - Front Housing Assembly



Standard with M5-1E & M5-2E, Optional with M5-1 & M5-2.

Part Numbers

620	Washer (2)	12M	Worm Shaft	25M	Worm Wheel	38M	Rear Handle, Md. M-5	637	Ball Bearing	76M	Cotter Pin (2)
1087	Handle Grip	13M	Worm	26M	Woodruff Key	42M	Center Plate	53M	Motor Armature, 115v	78M	Side Plate Gasket (2)
1M	Front Housing	14M	Worm Key	27M	Bearing (4)	42M-1	Gasket	253M	Motor Armature, 230v	79M	Shaft Seal (2)
2M-1	Spade Handle	15M	Ball Brg-Worm Shaft	28M	Cutter Bundle Key (2)	44M	Bearing Plate	57M	Armature Nut	80M	Rear Brg Seal
3M	Handle Screw & Wshr (3)	16M	Worm Shaft Wshr	29M	Cutter Bundle Felt (2)	45M	Plate Screw (4)	58M	Brush Holder (2)	81M	Side Pl Seal Scr (8)
4M	Screw	17M	Worm Shaft Screw	30M-1	Guard	46M	Motor Field, 115v	59M	Holder Set Screw (2)	86M	Wheel (2)
5M	Boss Plug (2)	10M	Side Plate (2 req'd)	30ME-1	Guard (not shown)	246M	Motor Field, 230v	60M	Holder Cap (2)	87M	Nut (2)
6M	Depth Shoe	90M	Cutter Bundles (1 set)	31M	Guard Screw & Wshr (4)	47M	Field Screw & L'Washer (2)	61M	Motor Brush (2)	88M	Cable Protector
7M	Depth Shoe Screw & Wshr	90ME	Cutter Bundles (2 sets) (not shown)	32M	Housing Brg Plate	48ME-1	Handle	69M	Switch, Md. M-5	89M	Bracket & Axle
8M	Front Housing Screw & Wshr (4)	24M-1	Cutter Spindle	31M	Plated Screw & Wshr (4)	48ME-2	Support (2)	7M	Carriage Screw & L'Washer (4)	664	Screw (2)
9M	Coupling	24ME-1	Spindle (not shown)	37M	Handle Screw (4)	50M	Armature Nut			1245	Oil (8 oz. Tube)